

Spring 2025

# Biomedical Signal & Image Processing

6.8800/HST.582

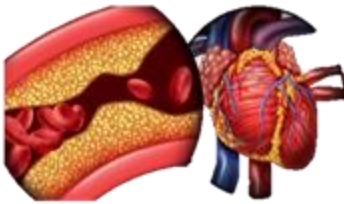
(G) fulfills TQE [4] for Course 6

6.8801/HST.482

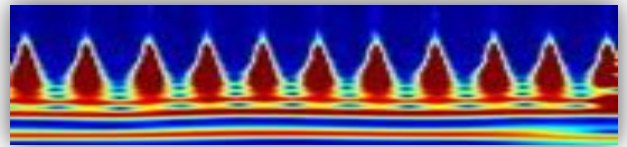
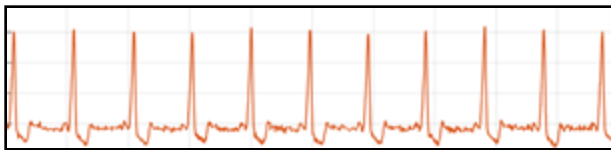
(UG) AUS2/DLAB2 for EECS



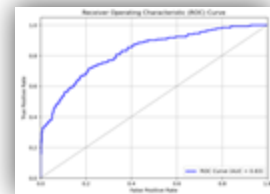
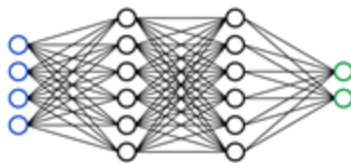
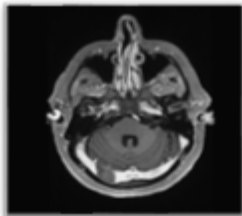
- ❖ Solve real-world problems in healthcare



- ❖ Deterministic vs random physiological data and signals



- ❖ Data engineering, filtering, and features for AI/ML



- ❖ Hands-on labs with ECG, speech, and CT/MRI



Lectures: **Tu, Th 9-10:30am E25-117**

Lab: **Fr 9-10/10-11am 34-301**

Questions? Email: [mralam@mit.edu](mailto:mralam@mit.edu)